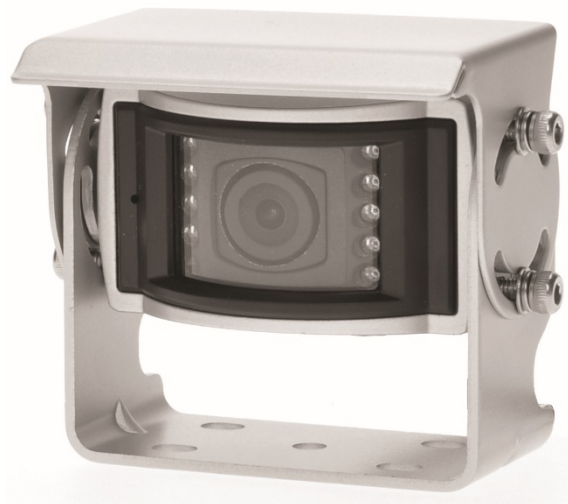




DBC 114069 SB (M)

Rear view camera
High-end color-camera



WEITERE INFOS



Features:

- Waterproof, high-end color-camera
- Wide viewing angle 150°(diagonal)
- Minimum illumination 0 lux
- Mirror/normal switch
- Vandal proof
- Waterproof IP69K
- Built-in automatic radiator
- Incl. 20 m connection cable (WPC 6)

Technische Änderungen und Irrtümer vorbehalten.



DBC 114069 SB (M)

Rear view camera
High-end color-camera



Technical data:

- Sony 1.23 Megapixel chipset
- Built-in microphone
- Al. die-cast housing
- Electronic auto-shutter with IR-LED beamer
- Viewing angle: 150°
- Mirror/normal switch
- Protection class: IP69K
- Minimum illumination: 0 lux
- Integrated heating
- Power supply: 9-14 V
- Operating temperature range: -40 °C to +85 °C
- Dimensions (WxHxD) 69 x 41 x 53 mm
- Weight: approx. 180 g

EAN 40 41044 220470

Version: 1080414

Technische Änderungen und Irrtümer vorbehalten.